

Lighting design

Location - South Eastern Melbourne Victoria

Brief - lighting design a 4 beds family home

Areas - family, meal, play, retreat, and master bed

Result - classic simplicity on energy efficiency

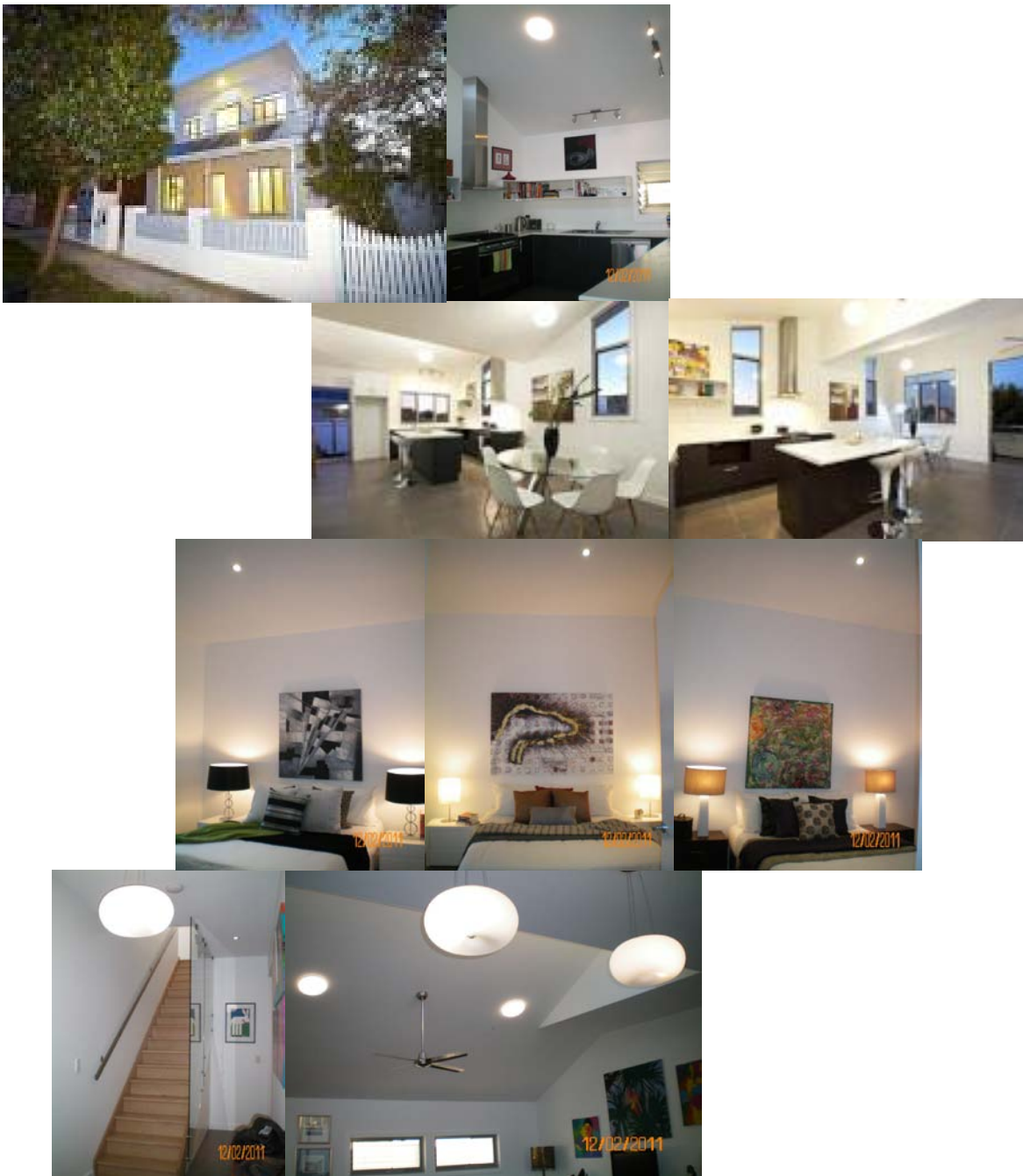


Location – Northcote Melbourne Victoria

Brief – sustainable lighting design two townhouses [three beds per building]

Area – internal and external living space

Result – energy efficiency to meet 7+ stars energy ratings





Location – Sunshine Victoria
Brief – sustainable lighting design residential home
Area – internal living space
Result – energy efficiency to meet sustainable living
Project in process

Location – Maidstone Victoria
Brief – sustainable lighting design residential home
Area – internal living space
Result – energy efficiency to meet 5+ stars energy ratings
No available image

Location – Carrum Down Victoria
Brief – sustainable lighting design residential home
Area – internal and external living space
Result – energy efficiency to meet 5+ stars energy ratings
No available image

Location – Cairnlea Victoria
Brief – sustainable lighting design residential home
Area – internal living space
Result – energy efficiency to meet 5+ stars energy ratings
No available image

For further information in lighting design, please contact us:

Elizabeth Tran
Founder + Design director
W: www.escdesi.com
E: info@escservices.com.au
M: +61 411 051 041